



News, Views

Issue No 3: July 2013

(.....and a few other interesting facts!)

Welcome to the third edition of our company newsletter. Keeping you informed of the latest news and developments here at Viridian Consulting Engineers Limited.

The Grain Loft, Manchester Airport T1



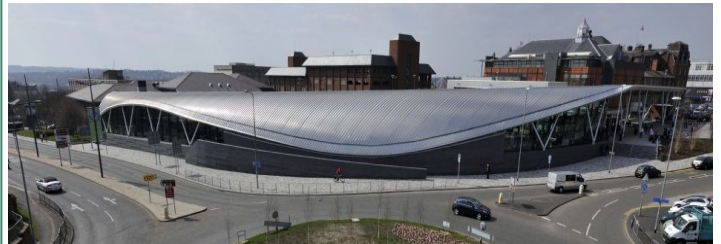
The Grain Loft is an innovative eating and drinking experience at the heart of Terminal 1.

Sound pods allow guests to eat and drink to the sound of their own iPod playlist, which can be enjoyed whilst sampling a pint of locally brewed ale. Customers can also help themselves from the self serve beer taps.

A further offering known as The Food Quarter, has also recently been completed. This is also based within Terminal 1 at Manchester Airport.

Viridian Consulting Engineers Limited are proud to have provided the Mechanical and Electrical services consultancy advice for Select Service Partnership on both of these projects.

Iconic new Bus Station opens in Stoke



A £10m bus station has been opened in Stoke-on-Trent as part of the first phase of a £350m regeneration plan.

Viridian Consulting Engineers Ltd were appointed to provide Mechanical and Electrical services consultancy advice together with commissioning management, assisting Realis Estates Limited and Stoke-on-Trent City Council.

The station, built on the site of the former John Street car park, has 22 waiting bays for buses. Changes have also been made to one-way streets, bus stop locations and traffic flow around the city to coincide with the station opening.

The services included photovoltaic panels on the roof, rain water harvesting and air source heat pumps.

Lancashire Business Park

Following the largest fire to have taken place in the UK during 2011, Viridian has been appointed as the Building Services Consultant for the development of three new buildings at Lancashire Business Park in Leyland. The fire ripped through a 450,000 sq ft building just before Christmas taking 30 days and more than 100 fire fighters to extinguish.

The project is currently on site with the construction of two new 15,500m² buildings to replace the original footprint. The services provided include incoming services and major diversions, highly energy efficient lighting, sprinkler protection, small power, fire alarms, external lighting, air source heat pumps, hot and cold water services and above ground drainage.



Armstrong Point proves to be a Winner!

This Zero Energy Cost Industrial Park, as featured in Viridian News Issue 1, has recently scooped a number of awards for its innovation and sustainable design.

The project received a Highly Commended for 'Commercial Building of the year' at the "RCIS" North West Awards in May where it was also listed as 'Finalist' in categories recognising 'Design & Innovation' and 'Regeneration' projects.

Receiving the 'Environmental Technology' category at the "Wigan Business Awards" run by the Manchester Chamber of Commerce, Armstrong Point also took the 'Top Slot' in the Industrial Category in the BREEAM Awards at this years Eco-Build in March.

At the North West Regional Construction Awards, it won the Lancashire 'Project of the Year' category and has also received a Highly Commended in the 'Breakthrough' category of the "Greenbuild" Awards.

All in all a hugely successful venture and one which we are extremely proud to have been involved with.



Did You Know?

Viridian Consulting Engineers Limited offer full range of Mechanical and Electrical services,

- Mechanical and Electrical services consultancy advice, including design and on-site monitoring of installations.
- Commissioning management.
- Production of thermal models to demonstrate compliance with Building Control requirements, in terms of Energy use.
- SAP calculations for domestic properties.
- Energy audits.
- Low and Zero carbon technologies feasibility reports.
- Mechanical and Electrical services acquisition surveys.
- Mechanical and Electrical services cost advice.
- Infrastructure advice in terms of existing external services installations and load assessments.
- Maintenance documentation.
- Energy Performance Certificates for both Domestic and Non-domestic properties.
- BREEAM assessments, including the Code for Sustainable Homes. FIND US LISTED IN THE GREEN BOOK LIVE AT www.greenbooklive.co.uk

